

Classic Fit
Designer Level

Tasmania Jacket

The flattering flames on this jacket are repeated on the back and sleeves, while the long neckline opening matches the front accent flames for a flattering neckline. The easy jewel-neck design has optional piping around the entire outer jacket edge and lower sleeves. The jacket is fully lined and the pattern includes complete instructions for handling the curves and points as well as the lining.

Designers Note: I originally planned on naming this jacket the Inferno - for the flames - but being a 'green' person, this fabric was just perfect for the cover model - and 'green' and 'inferno' just didn't match. This is a Designer's Level jacket pattern which I hope you enjoy for many years.



Yardage Requirements		S	M	L	XL
		(4-6)	(8-10)	(12-14)	(16-18)
Main Fabric (Green in Picture)	45"	3 yds	3 yds	3½ yds	3½ yds
Accent Fabric (Black in Picture)	45"	2 yds	2 yds	2 yds	2 yds
Also includes Facings and Optional Piping					
Underlining (Muslin or Cotton)	45"	3 yds	3 yds	3 yds	3 yds
Interfacing	33"	1½ yds	1½ yds	1½ yds	1½ yds
Lining	45"	1¼ yds	1⅓ yds	2 yds	2 yds
Optional Med-Weight Interfacing	33"	⅓ yd	⅓ yd	⅓ yd	⅓ yd



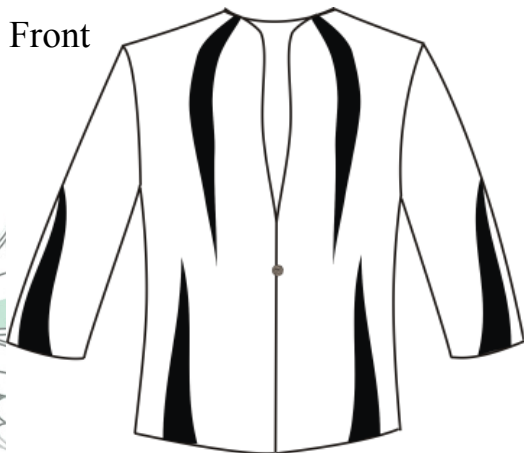
Finished Measurements

	S	M	L	XL
Back Length	23½"	24¼"	25"	25¾"
Waist	38"	40"	43"	47"
Hip	40"	42"	45"	49"

Notions - All are Optional

1/4" shoulder pads - 7" long x 4" wide preferable
6" soutache or other small braid (for buttonloop)
3/4" or 1" Button for Front
3 1/2 yards (1/8") piping filler

Front



Back



This pattern and all instructions is copyrighted 2007 by Brensan Studios and The Brensan Group, LLC. All rights reserved. Please contact for permission to reprint any portion hereof.

Brensan Studios™ #532 - 8912 E. Pinnacle Peak Rd F-9 - Scottsdale, AZ 85255

Website: www.brensan.com