

over  
 &  
 under

#320

A loose-fitting unlined sleeveless vest has a matching or contrasting jacket. Bias binding finishes the seams and edges for design impact. The short jacket can be worn with the vest or as a separate. Match the binding with the mock-wrap skirt for a totally coordinated concept. Multi-sized 4 - 26

Sizes	XS	S	M	L	XL	XXL
	4-6	8-10	12-14	16-18	20-22	24-26
Bust	30	31-33	34-36	38-40	42-44	46-48
Waist	23	24-25	26-28	30-32	34-37	38-41
Hip	32	33-34	36-38	40-42	44-46	48-50

**Yardages:** XS - M L - XXL  
 Vests - 1 yd. 45" or 60" for Bias  
 View A

45"	2 1/4	2 1/2
54/60"	1 7/8	2 3/8

View B

45"	2	2 3/8
54/60"	1 7/8	2 1/8

Back Length A or B - 32"

View C - Jacket

45"	2 1/4	2 2/3
54/60"	2	2 1/4

Jacket Back Length - 18"

Skirt - Views D or E

45"	2 1/8	2 1/8
54/60"	1 1/4	2 1/8

Skirt Back Length - 33 1/2"

9" Zipper for Skirt

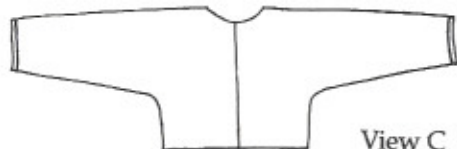
Back Views



View A, B



View D, E



View C

Pattern Art by  
 Anne Charles  
 © 1997 Lois Ericson

www.designandsew.com

