

# Layers & Layers #336

Sizes	XS	S	M	L	XL	XXL
	4-6	8-10	12-14	16-18	20-22	24-26
Bust	30	31-33	34-36	38-40	42-44	46-48
Waist	23	24-25	26-28	30-32	34-37	38-41
Hip	32	33-34	36-38	40-42	44-46	48-50

Multi-sized 4-26

## Yardages

Jacket, View A, long sleeves

	XS-S	M-L	XL-XXL
45"	2 1/8	2 1/4	2 3/8
60"	1 3/4	2	2 1/8

Jacket, View B, long sleeves

45"	2 1/4	2 1/4	2 3/8
60"	1 1/2	1 1/2	2 1/8

Jacket, View A or B, w/o sleeves

45"	1 5/8	1 5/8	1 5/8
60"	7/8	7/8	1 5/8

Contrasting fabric, all sizes A or B  
7/8 yd. - 60"

Interfacing for front, A or B  
7/8 yd. 45" or wider

Vest

45"	1 5/8	1 5/8	1 3/4
60"	7/8	7/8	1

Tunic

45"	2 1/8	2 1/8	2 1/4
60"	1	1 1/8	2 1/4

Back Length, finished:

Jacket & Vest: 27"

Tunic: 35"

Notions:

shoulder pads (jacket)

Fabric Suggestions:

Wool or blends, suiting, gabardine, heavy cottons, corduroy, textured silks, chenille, quilted rayon

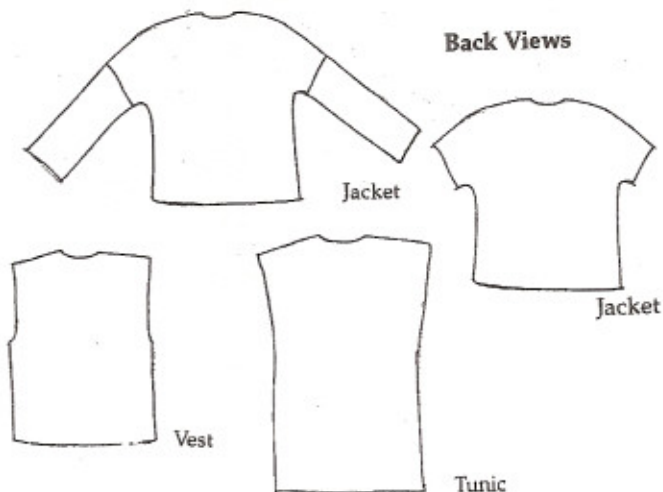
Contrast: Silk, cotton, rayon



The design of the jacket and the vest are inspired by the Design & Sew Logo. The jacket is unlined, the entire front is faced with a contrasting fabric. The vest is reversible and there are no closures indicated, designer's choice.

The simple construction of the tunic makes this an easy and practical addition to this or any other wardrobe plan.

## Back Views



www.bystitchintime.com  
(281)265-2515

Design & Artwork  
Lois Ericson © 2001