

Cosmopolitan #337

A sophisticated jacket that will take you anywhere. The curved seaming, front and back, flatters the figure. The jacket has a choice of a raised neckline or a shawl collar with button closures. For a more fitted look the side panels offer a space for a variety of options. The drop shoulder design looks great when made as a vest.

Sizes	XS	S	M	L	XL	XXL
Bust	30	31-33	34-36	38-40	42-44	46-48
Waist	23	24-25	26-28	30-32	34-37	38-41
Hip	32	33-34	36-38	40-42	44-46	48-50

Multi-sized 4-26

Yardages

Jacket, View A or B

	XS-S	M-L	XL-XXL
45" or 54"	2 3/8	2 1/2	2 1/2

Interfacing entire jacket, same as above

Contrasting fabric, all sizes, Views A or B
1 yd. - 36 or 45"

Vest

45" or 54"	1 3/4	1 3/4	1 7/8
------------	-------	-------	-------

Interfacing entire Vest, same as above

Back Length, finished:

Jacket or Vest = 29"

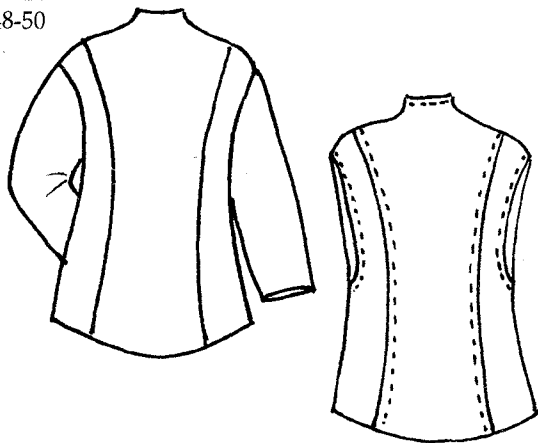
Notions:

- shoulder pads
- buttons

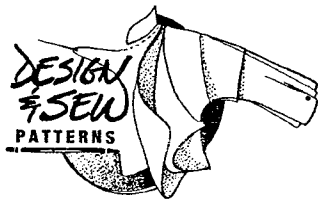
Fabric Suggestions:

Wool or blends, suiting, gabardine, heavy cotton, corduroy, textured silk

Contrast: Silk, cotton, rayon



Back Views Jacket and Vest



Design & Artwork

Lois Ericson © 2002

www.designandsew.com