

Cathay

#330



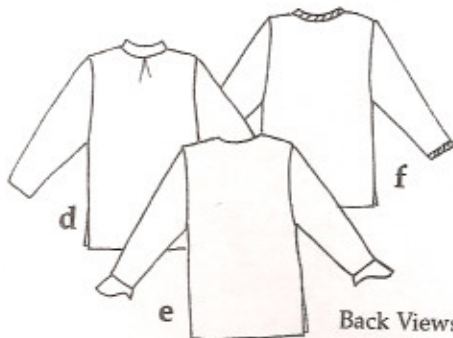
China was originally called Cathay so the name is appropriate for this Chinese inspired pattern. The vest opens in the center or has shaped extensions for an asymmetrical look. The Chinese top, cut longer than the vest, has three views. Also included are Chinese motifs, knot buttons & frogs, embroidery ideas.

Sizes	XS	S	M	L	XL	XXL
	4-6	8-10	12-14	16-18	20-22	24-26
Bust	30	31-33	34-36	38-40	42-44	46-48
Waist	23	24-25	26-28	30-32	34-37	38-41
Hip	32	33-34	36-38	40-42	44-46	48-50

Multi-sized 4-26



a, b, c



Back Views

Yardages

Vest

View A	XS-S	M-L	XL-XXL
45"	1 1/4	1 5/8	1 5/8
60"	7/8	1	1 1/4

View B

45"	1 1/2	1 1/2	2
60"	1 1/8	1 1/4	1 1/2

View C

45"	1 3/8	1 5/8	1 5/8
60"	1	1	1 1/2

Chinese Top

View D

45"	2 1/2	2 5/8	3
60"	1 5/8	2	2 1/8

View E

45"	2 5/8	2 7/8	3
60"	2	2	2 3/4

View F

45"	2	2 3/8	2 3/4
60"	1 3/4	2	2 1/4

Back Lengths, finished:

Vests = 26", Top = 29"

Fabric Suggestions:

Top - silk crepe de Chine, textured rayon, cotton jacquard, sheer wool, silk noil

Vest - velveteen, silk, brocade, wool, corduroy, denim, rayon

Design & Artwork:

Lois Ericson © 2000



www.designandsew.com