

# in the Studio -- 7



Any view can easily be made into a vest.

## Yardages

	xs-s	m-l	xl-xxl
View A or B			

45"	1 3/4	2 1/2	2 1/2
-----	-------	-------	-------

60"	1 5/8	1 3/4	2
-----	-------	-------	---

### Lining &/or vest

45"	1 1/4	1 3/8	1 5/8
-----	-------	-------	-------

60"	1 1/8	1 1/8	1 1/4
-----	-------	-------	-------

## View C

45"	2 1/4	2 1/2	2 3/4
-----	-------	-------	-------

60"	1 3/4	2 1/4	2 1/4
-----	-------	-------	-------

### Lining &/or vest

45"	1 1/4	1 3/8	1 3/8
-----	-------	-------	-------

60"	3/4	1 1/8	1 1/4
-----	-----	-------	-------

Notions: View A or B, 1 button

View C, 1 - 3 buttons

Fabric Suggestions: linen, silk,  
wool, cotton, suitings, rayon

Average Back length = 25"

Multi-sized 4 - 26

Sizes	XS	S	M	L	XL	XXL
	4-6	8-10	12-14	16-18	20-22	24-26
Bust	30	31-33	34-36	38-40	42-44	46-48
Waist	23	24-25	26-28	30-32	34-37	38-41
Hip	32	33-34	36-38	40-42	44-46	48-50

Folds & Edges has three distinct looks. View A has an origami-type collar that can be folded and worn in a variety of ways.

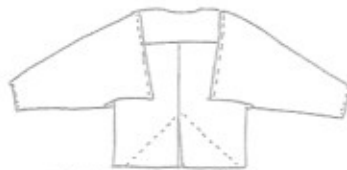
View B has a lined and folded front band that extends beyond the hem.

View C has a triangular front section for a flattering diagonal line. The clever, topstitched sleeve can be added to any jacket or shirt on a future project.



View A or B

Back view



View C

Design & artwork

Lois Ericson®

[www.designandsew.com](http://www.designandsew.com)