

In the Studio - 10

Yardages

XS-S-M L-XL-XXL
View A - Jacket

45" 1 3/4 1 7/8
60" 1 1/2 1 5/8

View A - Contrasting bands
on bias

45" 1 1
60" 7/8 7/8

View A & C - lining

45" all sizes - 1 3/4

View B - Jacket unlined

45" 2 2 1/4
60" 1 1/2 1 3/4

View C - Jacket

45" 2 1/2 2 1/2
60" 1 1/2 1 3/4

View C - Contrasting bands

60" all sizes - 3/4

Multi-sized 4 - 26

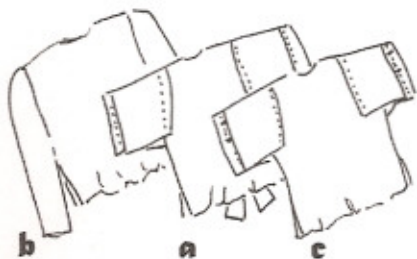
Finished Back length
22" all views

Notions: View A, B, C,
Buttons optional, View A
View B: shoulder pads &
trims for front bands
View C: 3-4 buttons

Sizes	XS	S	M	L	XL	XXL
Bust	4-6	8-10	12-14	16-18	20-22	24-26
Waist	30	31-33	34-36	38-40	42-44	46-48
Hip	23	24-25	26-28	30-32	34-37	38-41
	32	33-34	36-38	40-42	44-46	48-50

The curved front bands set the direction for this jacket design. The front is divided into two sections with overlay and pocket options. Back is slightly flared.

Views A & C are lined. View B is unlined with long sleeves and trims on the front band. On all views, the finished sides are overlapped. View C has a notched detail on the front bands, sleeve bands and pockets.



back views

Fabric Suggestions:

wool, cotton, rayon
linen, silk

Design & artwork

Lois Ericson © 2006

www.designandsew.com

