

Kimono Encore

#327

Sizes	XS	S	M	L	XL	XXL
	4-6	8-10	12-14	16-18	20-22	24-26
Bust	30	31-33	34-36	38-40	42-44	46-48
Waist	23	24-25	26-28	30-32	34-37	38-41
Hip	32	33-34	36-38	40-42	44-46	48-50

Multi-sized 4-26

Note: Yardages for contrasting neckbands are calculated for cutting on the crosswise grain.

Yardages: XS-S M-L XL-XXL

Vest View A

45"	7/8	1	1 1/4
60"	7/8	1	1

Contrasting Neckband, all sizes - 45" = 1/3 yd.

Lining - Vest

A or B- 45" 1 1/8 1 1/8 2

Vest View B, wide scarf-like band

45"	1	1 1/8	1 1/2
60"	1	1 1/8	1 1/8

Contrasting 45" 1 1 1/8 1 1/2

Kimono... Long, View C

45"	3 1/8	4 1/2	4 5/8
60"	2 1/2	2 5/8	2 3/4

Contrasting Neckband, all sizes: 60" = 1/3 yd.

Kimono... Short, View C

45"	3 1/4	3 3/8	3 3/4
60"	2	2 3/8	2 7/8

Contrasting Neckband, all sizes: 45"/60" = 1/3 yd

Big Shirt, View D

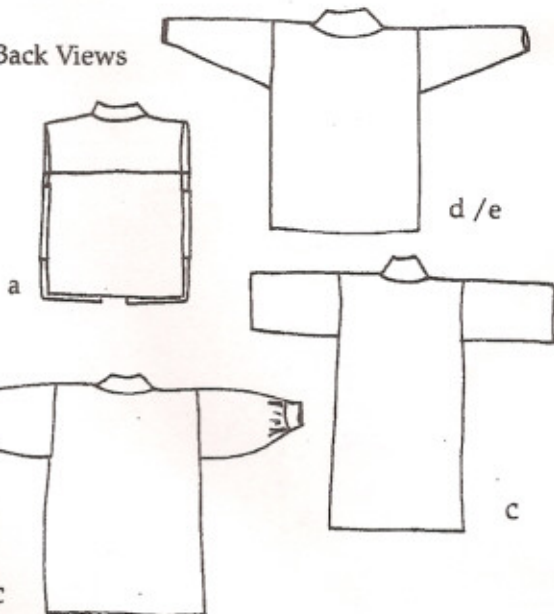
45"	2 7/8	3	3 1/4
60"	1 1/2	1 3/4	1 7/8

Big Shirt, View E

45"	2 7/8	3	3 1/4
60"	2	2 3/8	2 1/2

The simple kimono shape, a perfect background for any intricate design or decorative detail, has fascinated artists and designers for centuries. Let's take another look at a few of the garments that are possible to make from a basic kimono idea. A kimono or evening coat in two lengths, a long robe, two big shirts, two vests to wear over any of the other pieces. This very loose fitting garment is multi-sized 4-26.

Back Views



Design & Artwork:

Lois Ericson © 1999

www.bystitchintime.com

(281)265-2515

